

8

7

6

5

4

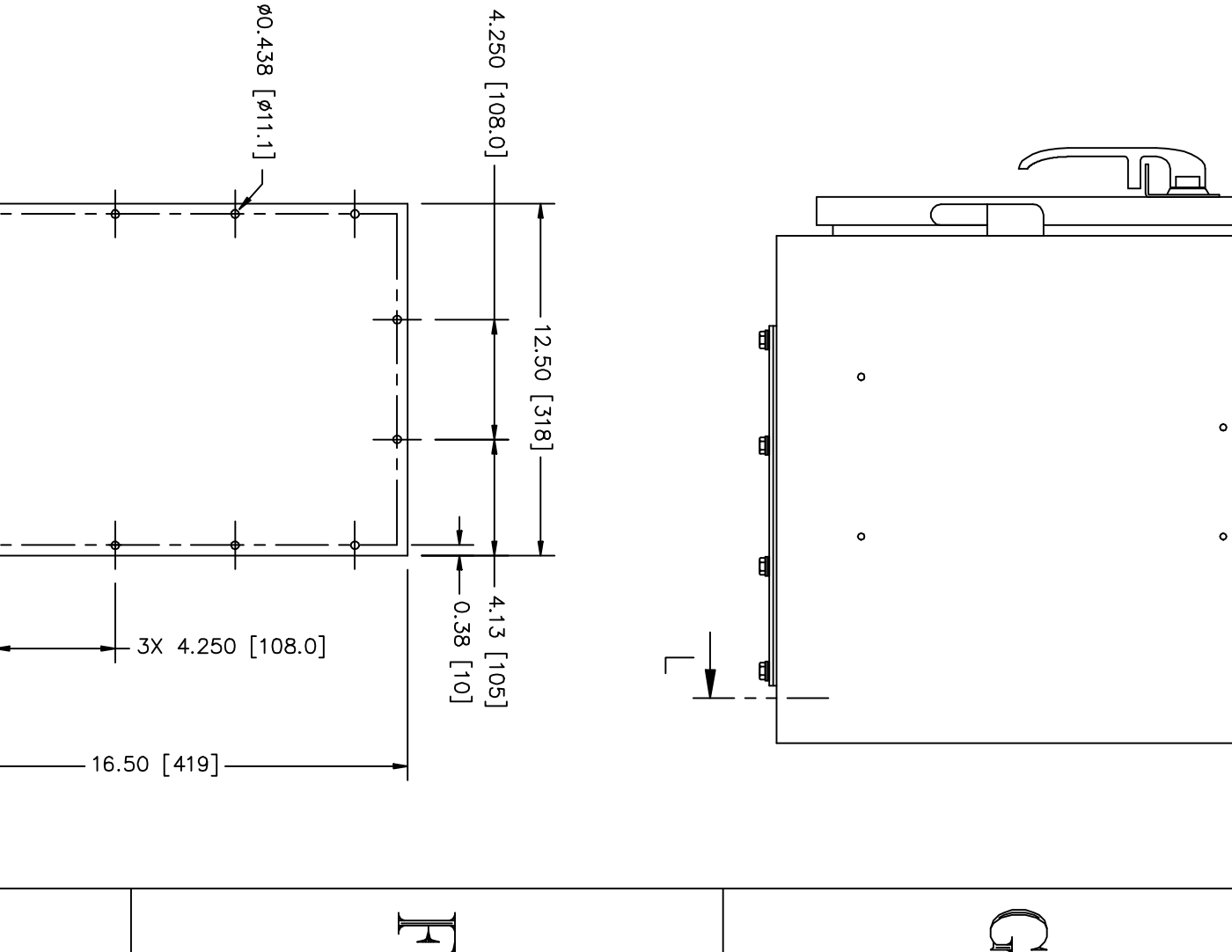
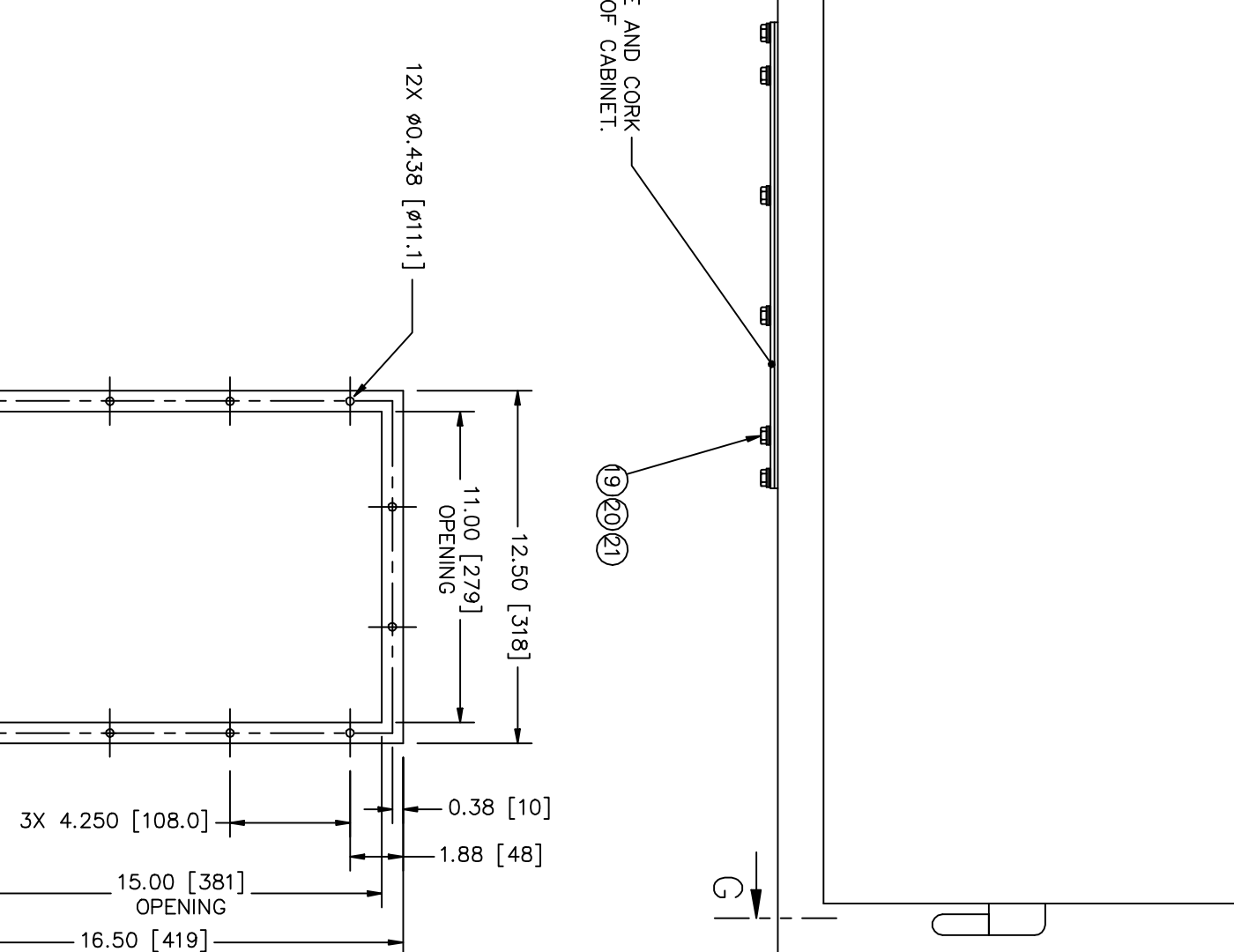
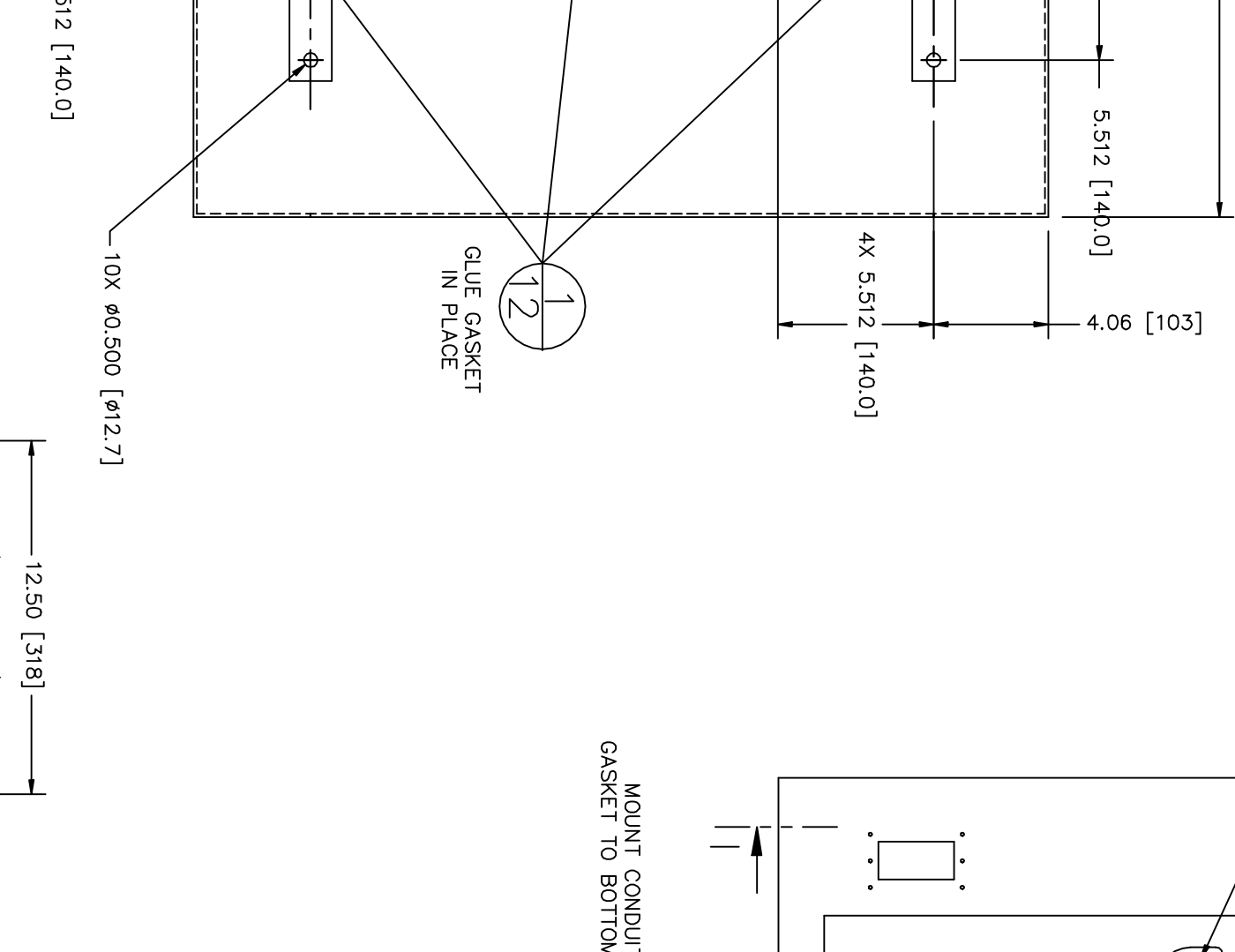
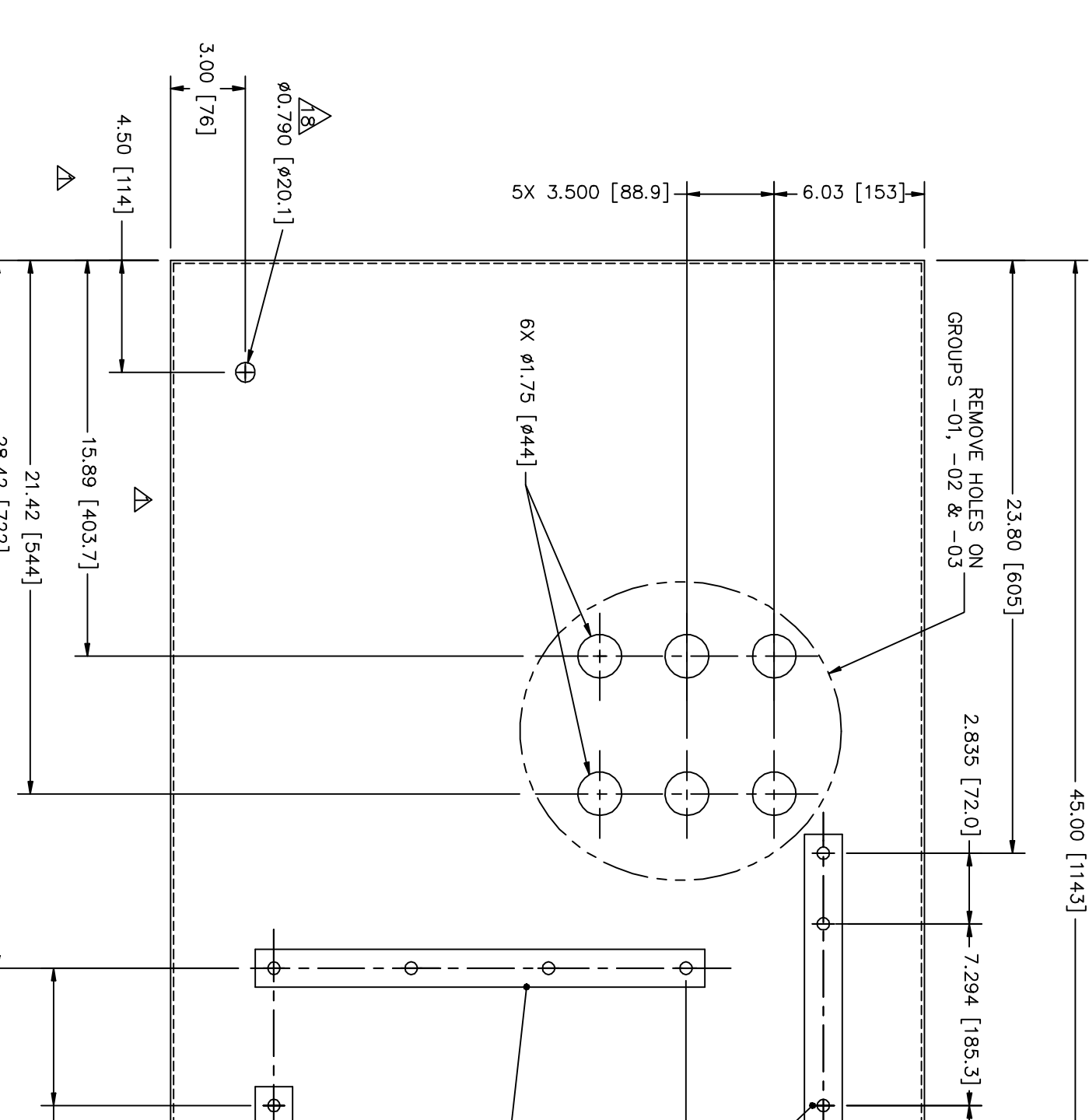
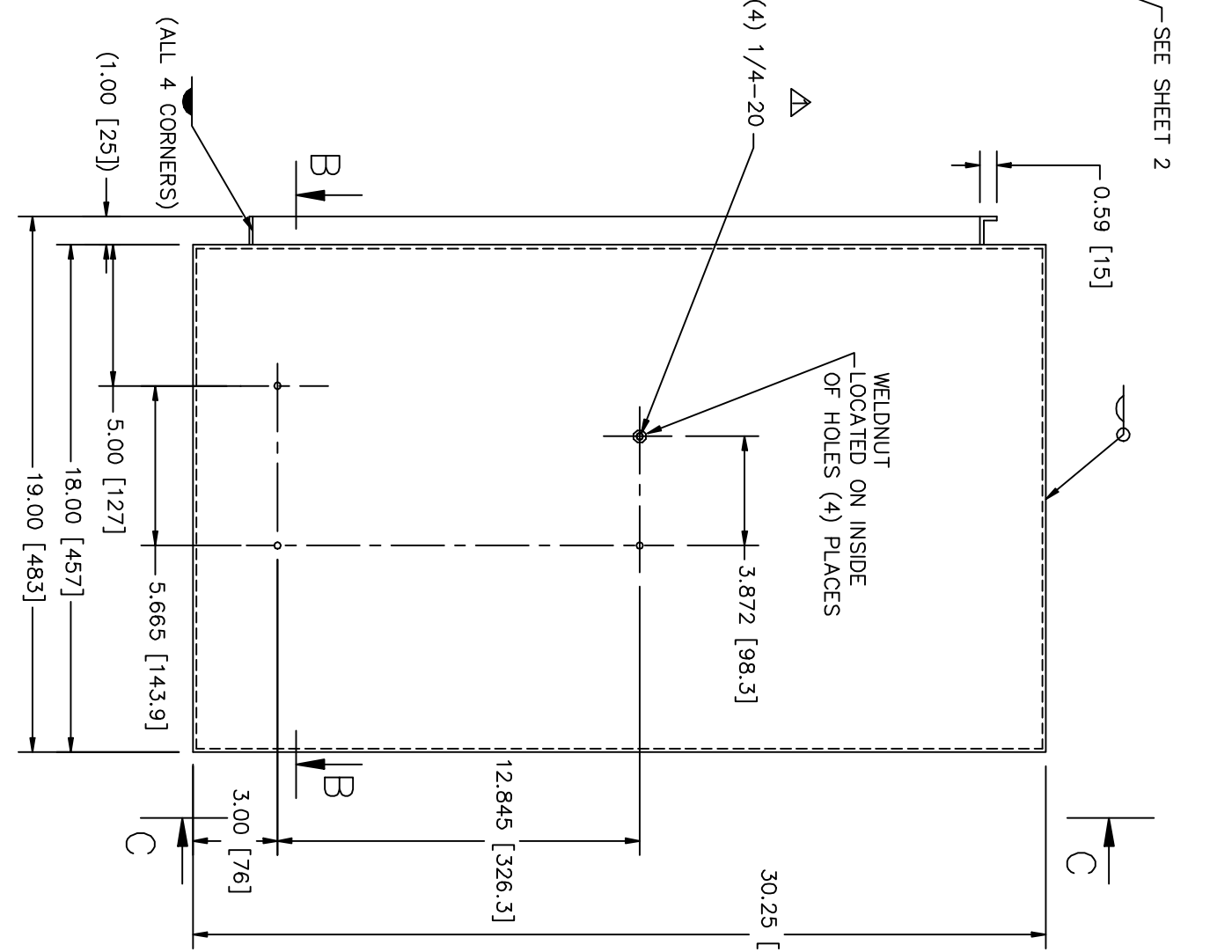
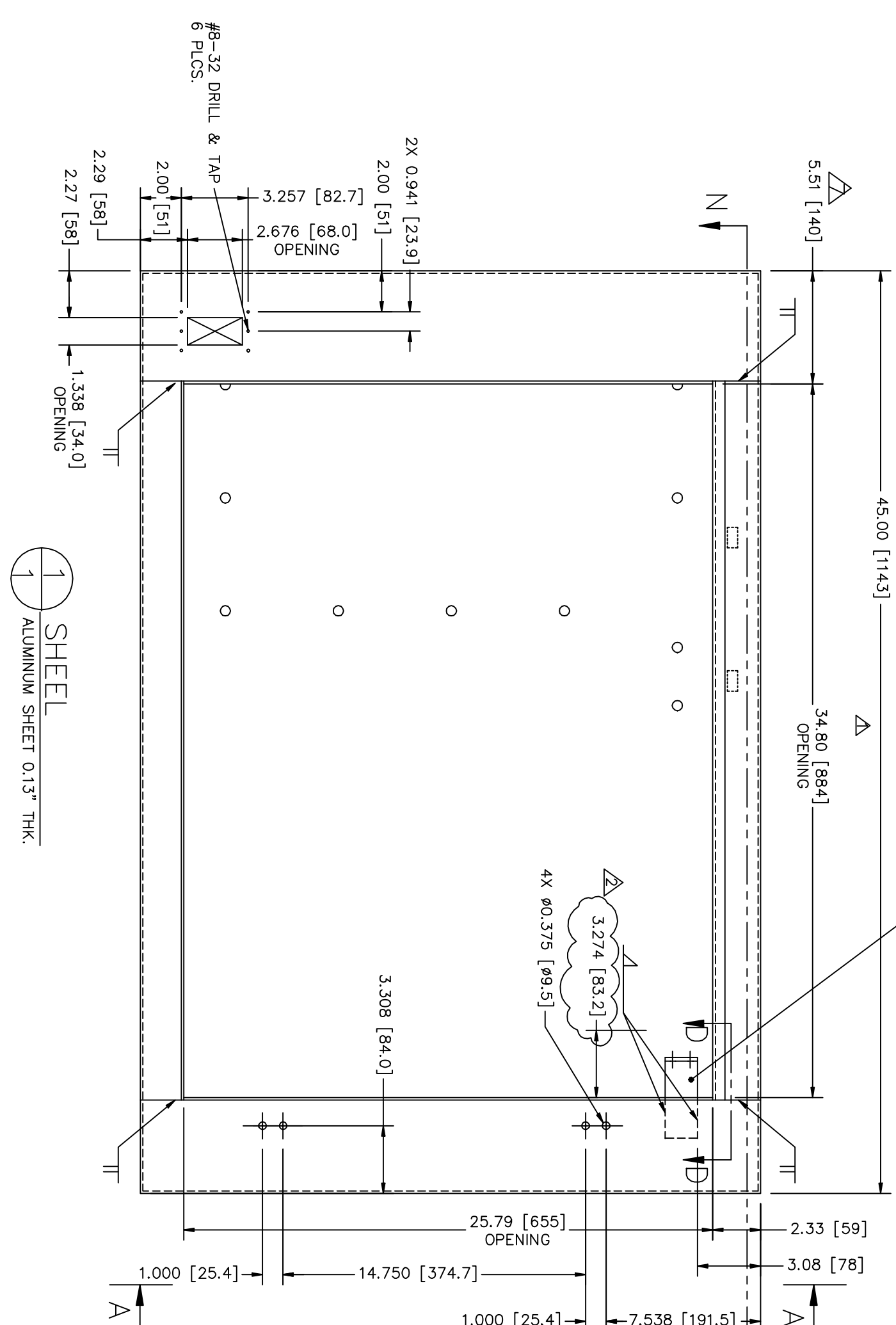
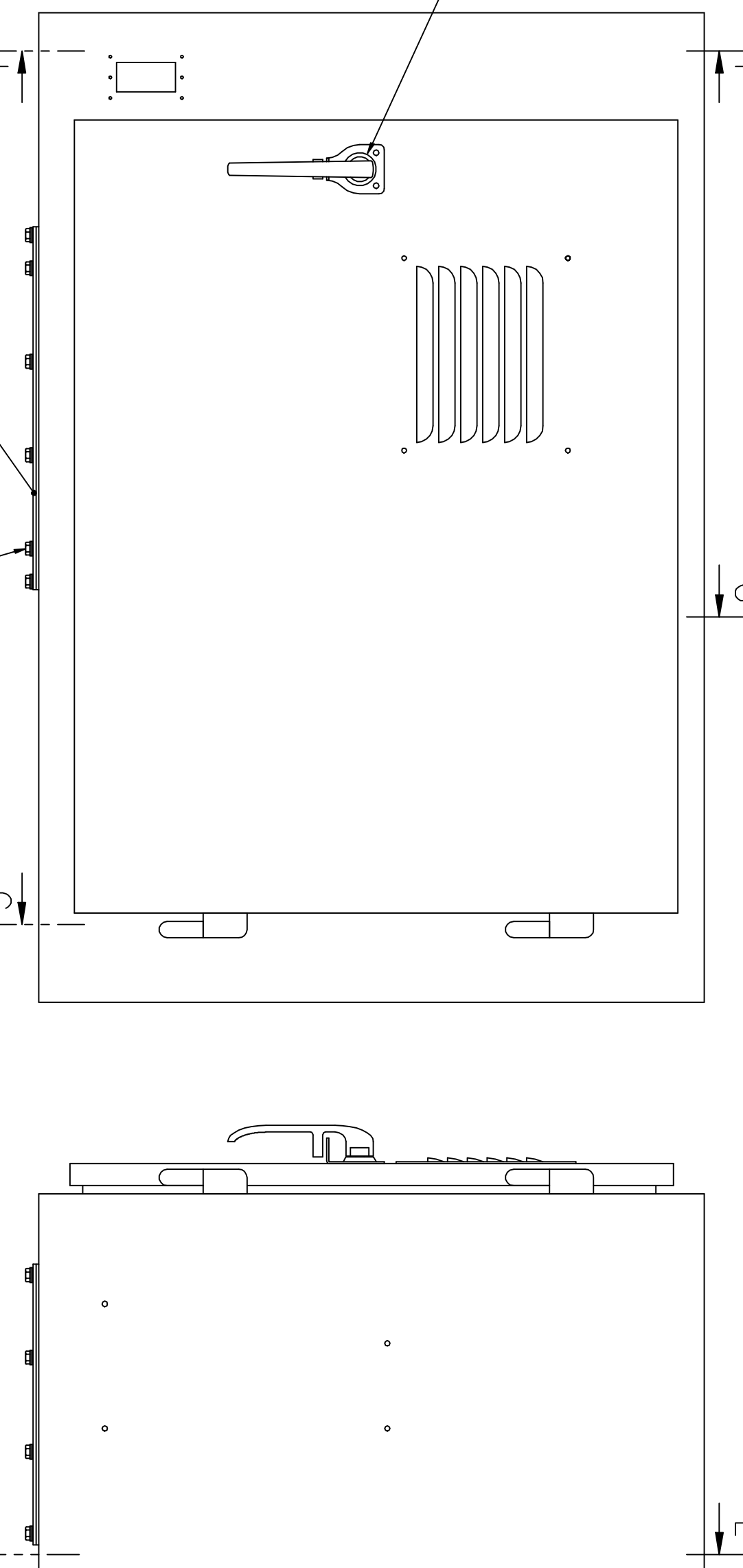
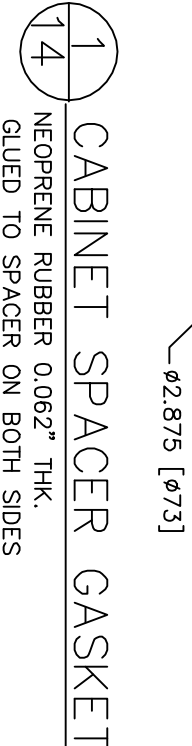
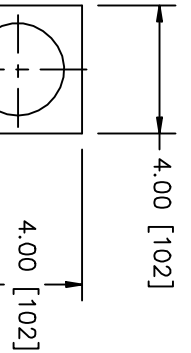
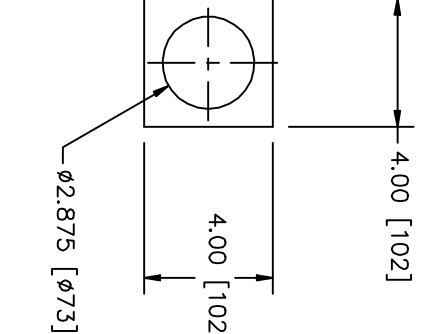
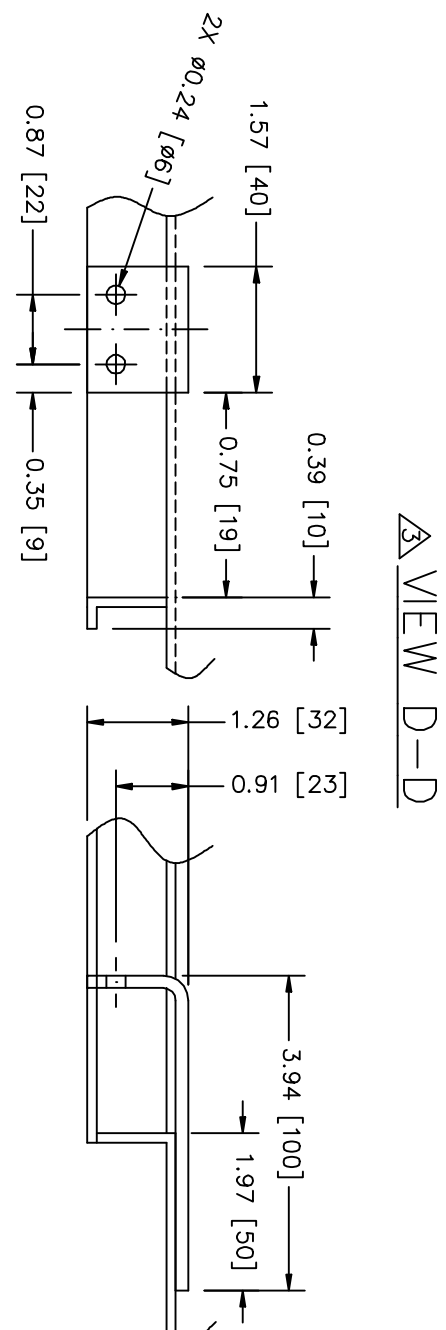
3

2

1

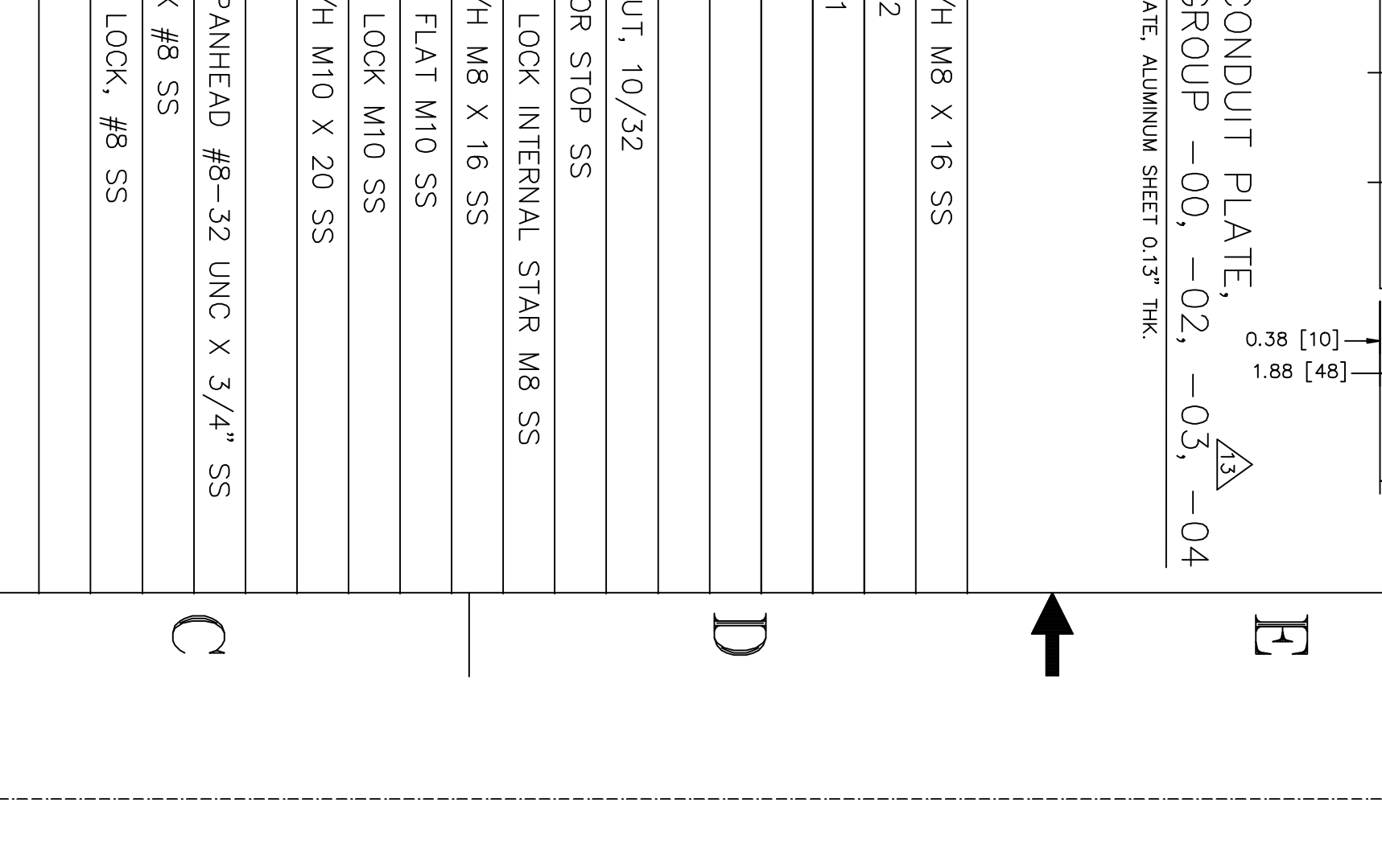
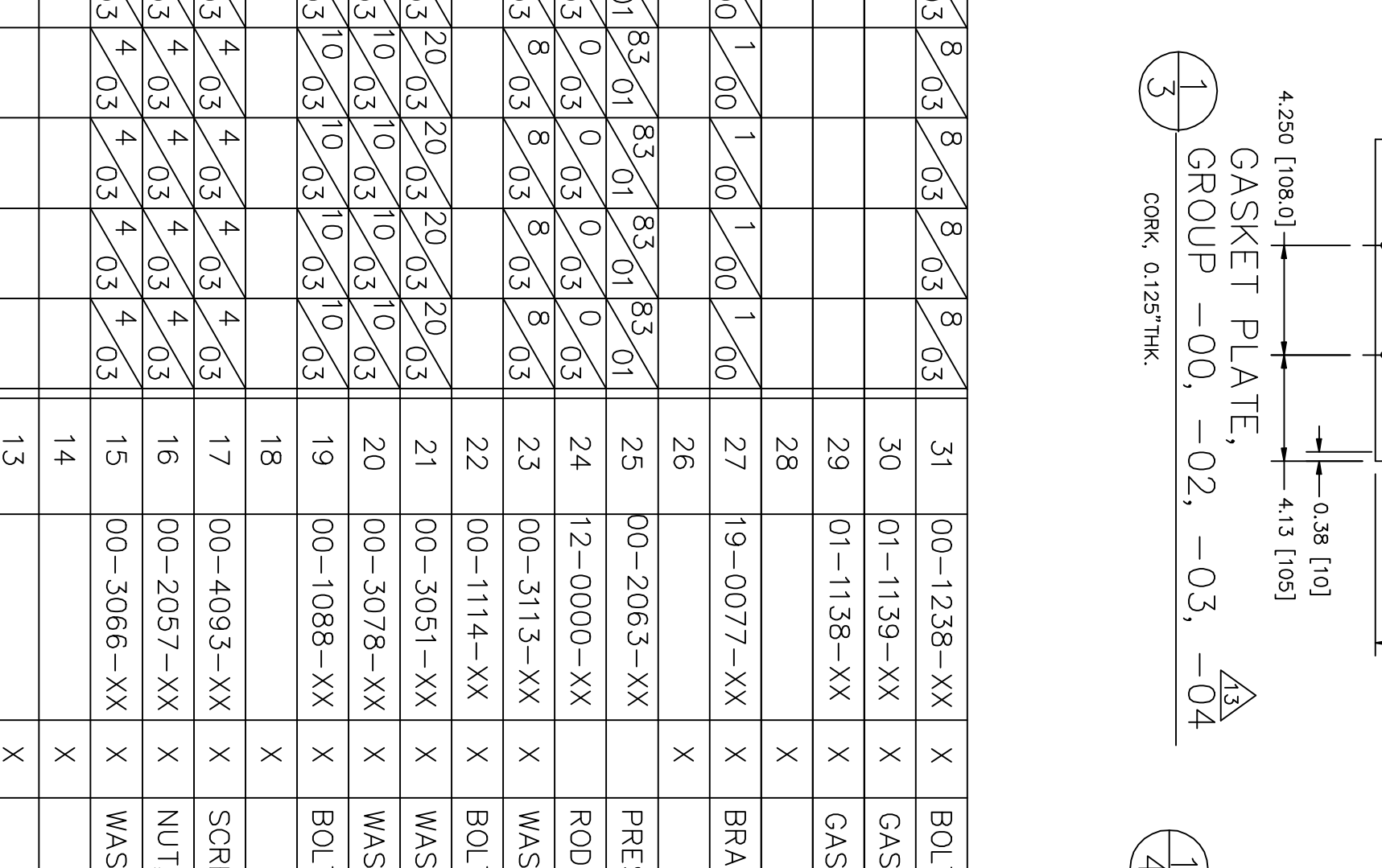
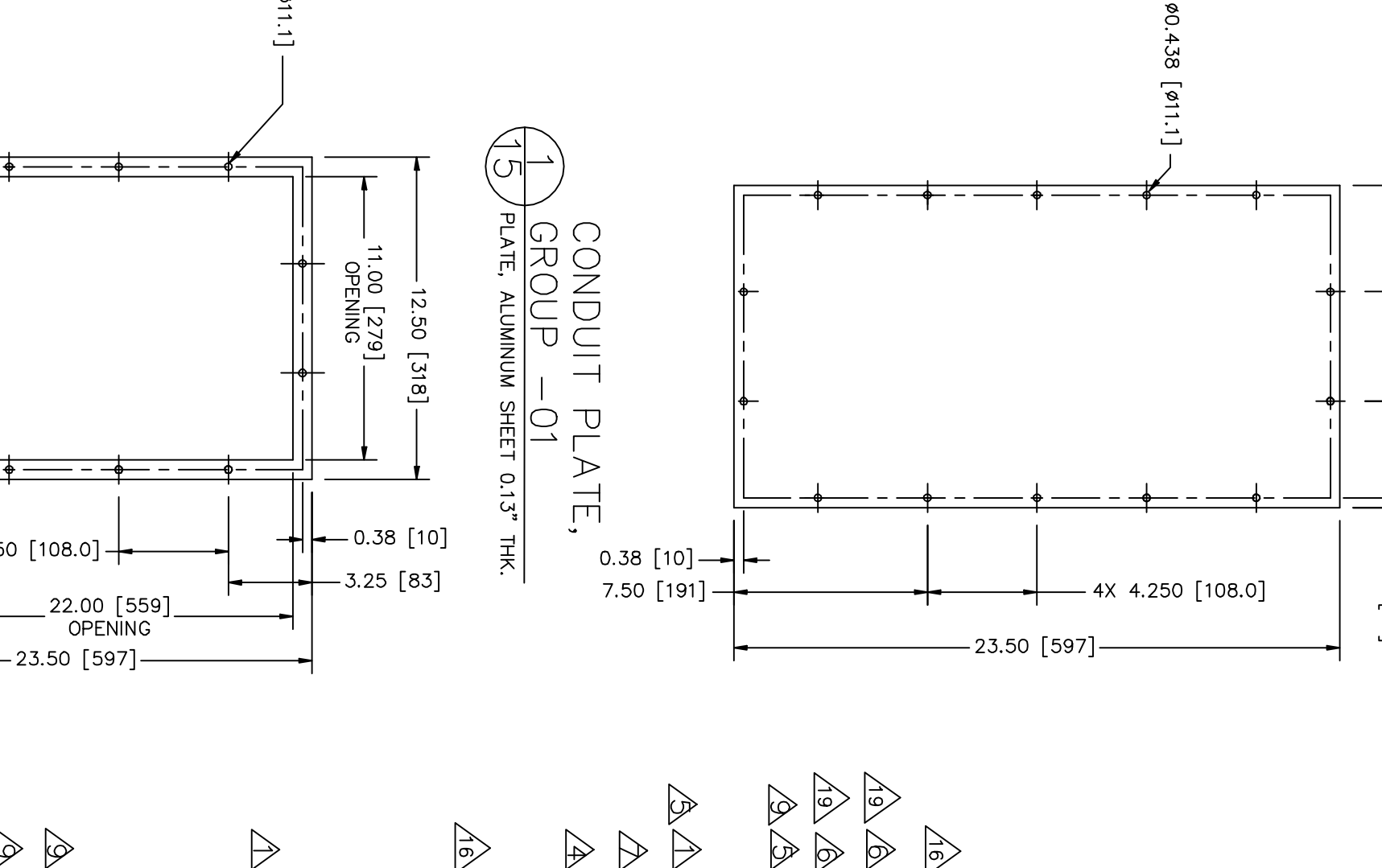
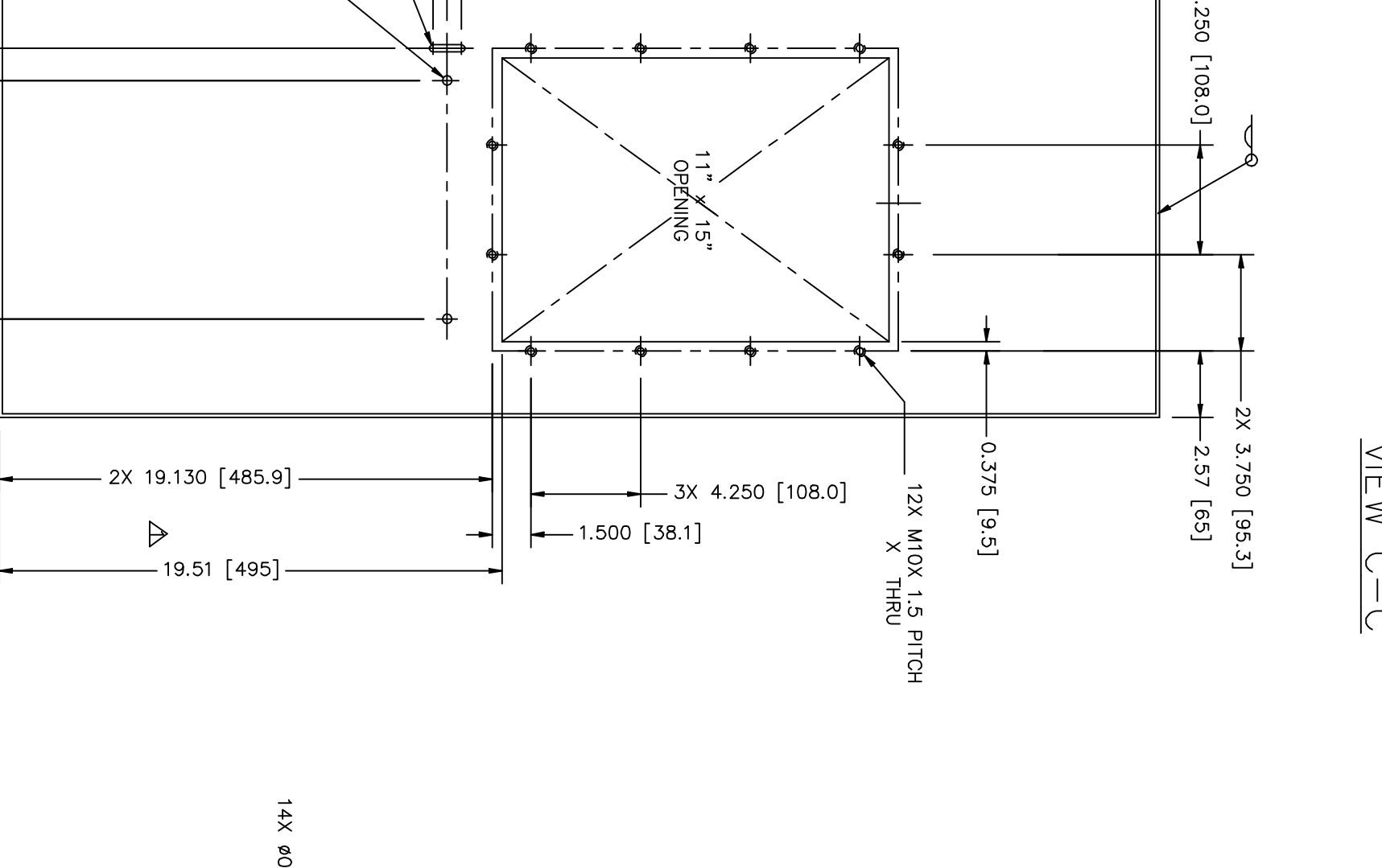
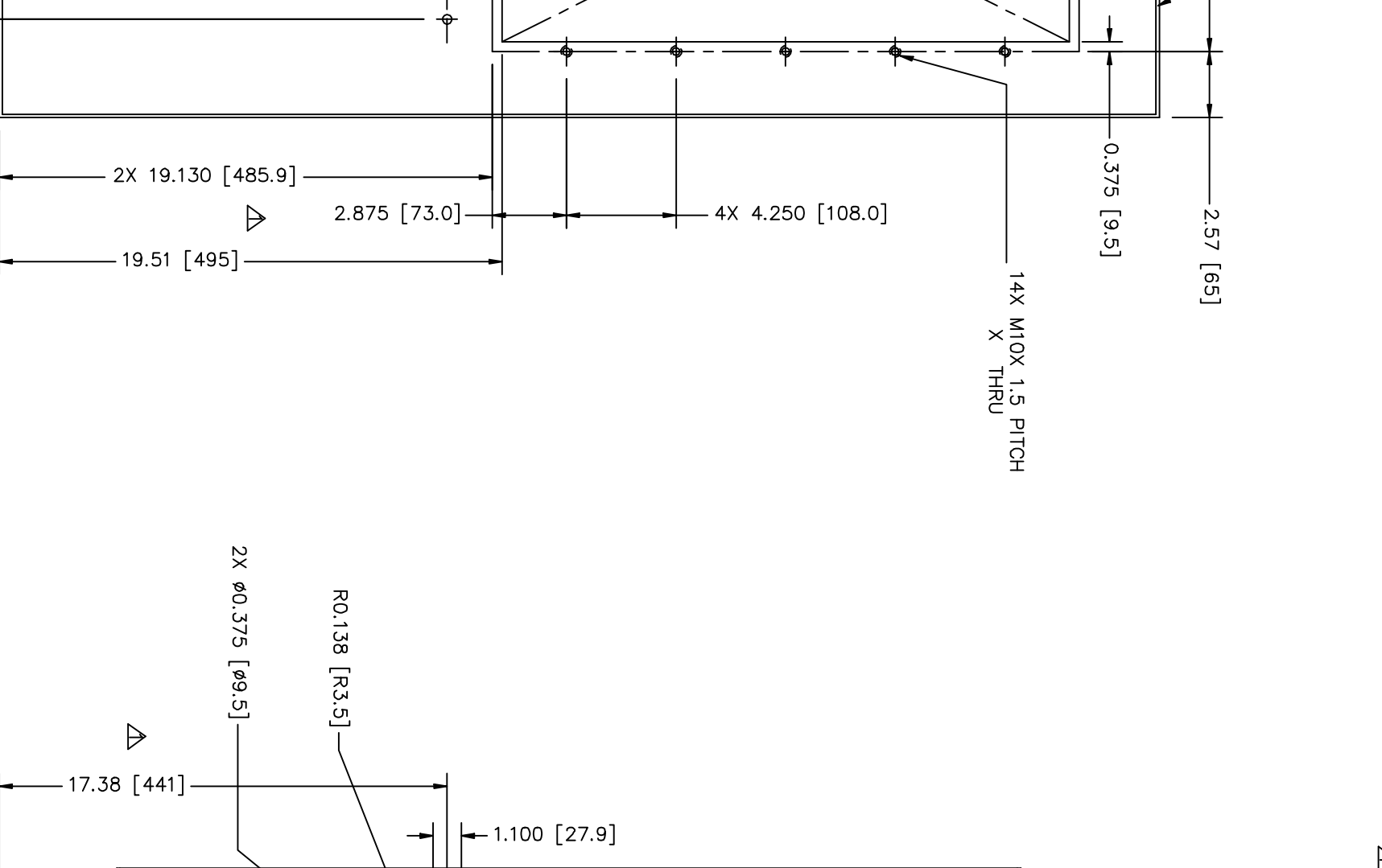
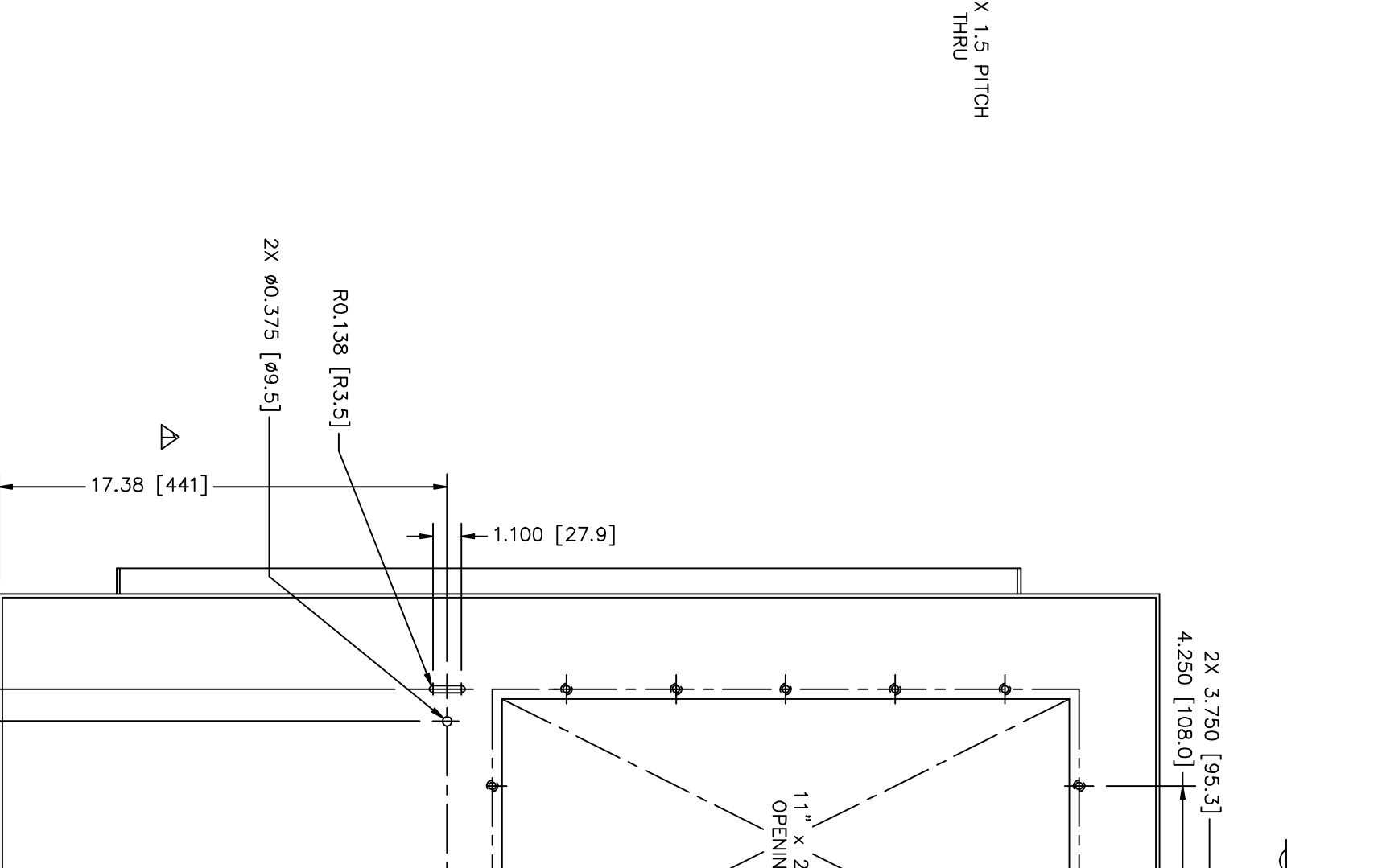
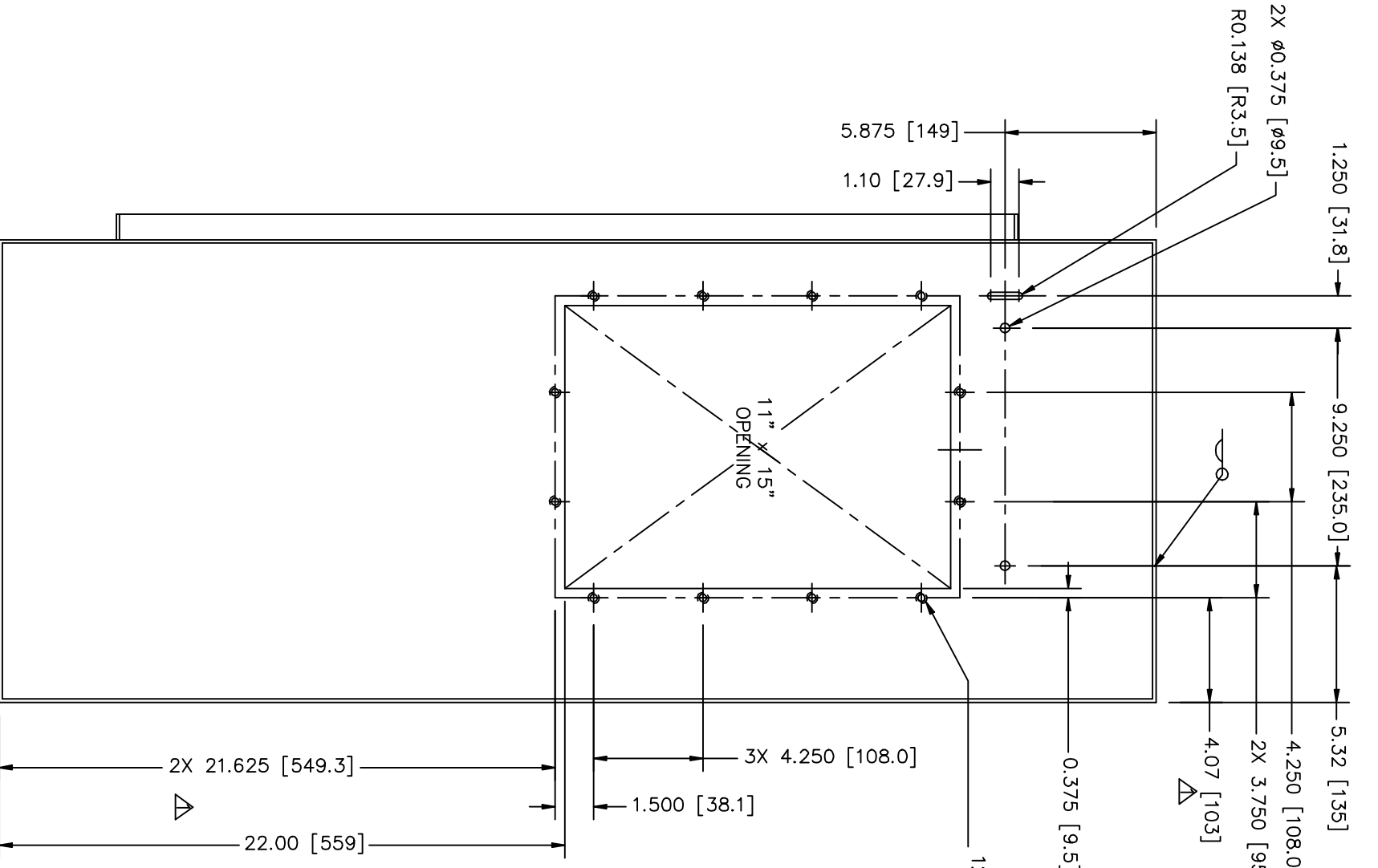
REVISIONS			DATE	APPROVED
ZONE	REV	DESCRIPTION	DATE	
0		RELEASED PER ECO 060095	08/16/06	

SEE SHEET 3 FOR REVISIONS



→

→



VIEW B-B, GROUP -00, -03, -04

VIEW B-B, GROUP -01

VIEW B-B, GROUP -02

B

B

NOTES

1. THIS DRAWING IS DIMENSIONED IN ACCORDANCE WITH ANSI Y14.5M-1982.
2. MATERIAL(S) SEE NOTES UNDER EACH ITEM
3. ALL INTERNAL BEND RADI AS NEEDED BY VENDOR UNLESS OTHERWISE NOTED.
4. ALL EXTERNAL SEAMS AND NONFUNCTIONAL OPENINGS ARE TO BE WATER SEALED WITH CLEAR RTV OR EQUIVALENT.
5. ALL WELDING AS NEEDED BY VENDOR UNLESS OTHERWISE NOTED
6. RAKU-PUR 32-3280-52, CUT RESISTANT FORM-IN-PLACE, GASKETING SYSTEM

GASKET PLATE, GROUP -01

CORK, 0.132\"/>

GROUP.

00 - STANDARD CABINET. (SEE VIEW B-B, -00 DETAIL).

01 - EXTENDED CONDUIT OPENING WITH NO BCT HOLES. (SEE VIEW B-B, -01 DETAIL).

02 - NO BCT HOLES & GROUND BAR LOCATED ON RIGHTSIDE OF CONDUIT OPENING. (SEE VIEW B-B, -02 DETAIL).

03 - STANDARD CABINET W/NO CONDUIT HOLES.

Δ04 - STANDARD CABINET FOR PACIFICORP. (SEE VIEW C-C, -04 DETAIL).

Δ	04	03	02	01	00	ITEM #	PART #	REV.	DESCRIPTION, MATERIAL
Δ	04	03	02	01	00	1	12-0101-XX	X	HINGE, DOOR
Δ	04	03	02	01	00	2	01-1063-XX	X	GASKET, DOOR 3/8 X 3/4"
Δ	04	03	02	01	00	3	5612 ZN	X	TWO POINTS SWMEL LATCH ASSY. (ALLEGIS)
Δ	04	03	02	01	00	4	47 5655 SSX	X	DOOR HANDLE (AUSTIN)
Δ	04	03	02	01	00	5	6	X	
Δ	04	03	02	01	00	6	7	X	
Δ	04	03	02	01	00	7	8	00-3025-XX	WASHER, FLAT 1/4"
Δ	04	03	02	01	00	8	9	X	
Δ	04	03	02	01	00	9	10	00-2058-XX	NUT, SELF LOCKING, 1/4"
Δ	04	03	02	01	00	10	11	5559 ZN	PAWL LATCH DOOR (ALLEGIS)
Δ	04	03	02	01	00	11	12	X	
Δ	04	03	02	01	00	12	13	X	
Δ	04	03	02	01	00	13	14	X	
Δ	04	03	02	01	00	14	15	00-3066-XX	WASHER, LOCK, #8 SS
Δ	04	03	02	01	00	15	16	00-2057-XX	NUT, HEX, #8 SS
Δ	04	03	02	01	00	16	17	00-4093-XX	SCREW, PANHEAD #8-32 UNC X 3/4" SS
Δ	04	03	02	01	00	17	18	X	
Δ	04	03	02	01	00	18	19	00-1088-XX	BOLT, H/H M10 X 20 SS
Δ	04	03	02	01	00	19	20	00-3078-XX	WASHER, LOCK M10 SS
Δ	04	03	02	01	00	20	21	00-3051-XX	WASHER, FLAT M10 SS
Δ	04	03	02	01	00	21	22	00-1114-XX	BOLT, H/H M8 X 16 SS
Δ	04	03	02	01	00	22	23	00-3113-XX	WASHER, LOCK INTERNAL STAR M8 SS
Δ	04	03	02	01	00	23	24	12-0000-XX	ROD, DOOR STOP SS
Δ	04	03	02	01	00	24	25	00-2063-XX	PRESS NUT, 10/32
Δ	04	03	02	01	00	25	26	X	
Δ	04	03	02	01	00	26	27	19-0077-XX	BRACKET
Δ	04	03	02	01	00	27	28	X	
Δ	04	03	02	01	00	28	29	01-1138-XX	GASKET 1
Δ	04	03	02	01	00	29	30	01-1139-XX	GASKET 2
Δ	04	03	02	01	00	30	31	00-1238-XX	BOLT, B/H M8 X 16 SS